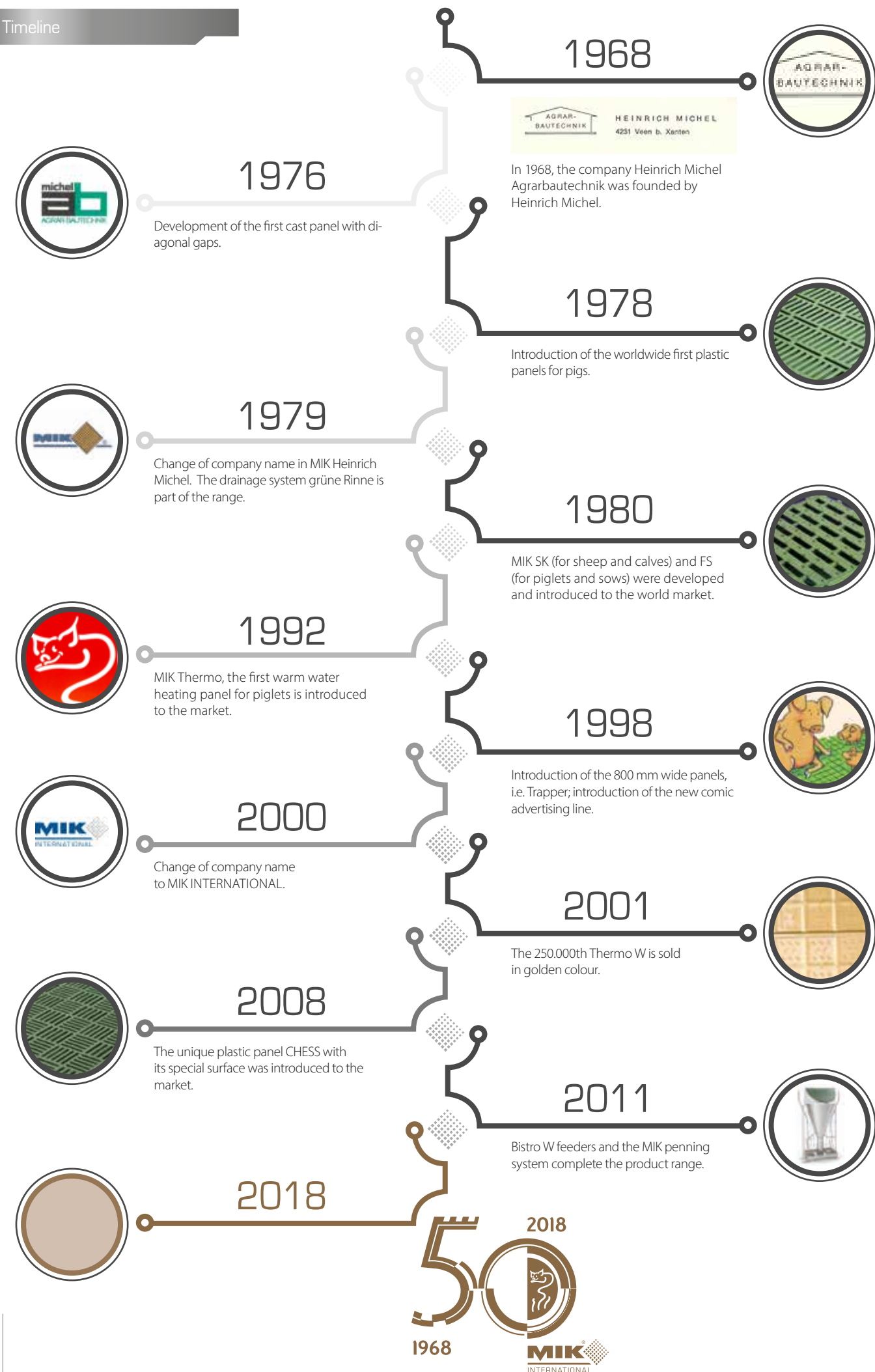










English

MADE IN GERMANY



General overview

| Subjects  | Content                                | Site  |
|---|--|---|
| <b>Farrowing</b><br>                   | Farrowing panel systems                | 4   |
|   | SWING                                  | 5 – 6   |
|   | Concrete inlets                        | 7   |
|   | CAST                                   | 8   |
|   | THERMO heating systems                 | 9 – 13  |
| <b>Nursery</b><br>                     | Piglet panel systems                   | 14  |
|   | CHESS                                  | 15  |
|   | RUBIN                                  | 16  |
| <b>Finishing</b><br>                   | Finishing panel systems                | 17  |
|   | TRAPPER & SMARAGD                      | 18  |
|   |  |   |
| <b>Calves and milking parlour</b><br> | Calf panels & milking parlour flooring | 20  |
|   | PRÄRIE & TRAPPER & STEPPER             | 21  |
|   | Calf box                               | 22  |
| <b>Sheep and goat farming</b><br>    | Sheep & goat panel system              | 23  |
|   | STEPPER                                | 24  |
| <b>Poultry slat</b><br>              | Poultry slat                           | 25 - 26   |
|   | Broiler slat                           | 27  |
|   |  |   |
| <b>DUO support beam system</b>  |  | 28 – 29   |
| <b>Penning systems</b>  |  | Farrowing, Nursery, Finishing   |
| <b>Dividing boards</b>  |  | 32 – 33   |
| <b>BISTRO feeders</b>   |  | Bistro feeders, drop feeders, corner, feeding pan   |
| <b>Accessories</b>  |  | Edge strips, support strips, installation material, slurry system, Rolls & TOY, Grüne Rinne |
| <b>Layout samples</b>   |  | 45  |
| <b>Innovation &amp; quality performance areas</b>   |  | 46 – 47   |



# Farrowing panel systems



Optimal step safety  
with specially designed  
surfaces

Farrowing

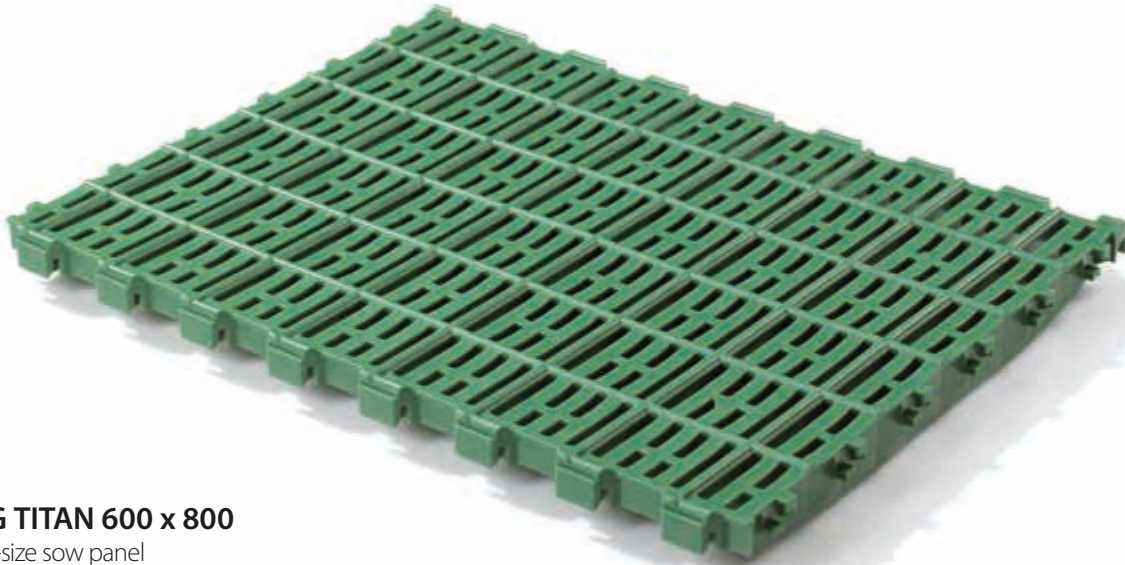


## Product benefits

- stable and hygienic
- versatile and animal friendly
- extremely strong and durable

# SWING farrowing panel system

The SWING system offers a wide variety of individual combinations with different sizes and surface types for farrowing. Intelligent hygienic solutions can be integrated additionally.



**SWING TITAN 600 x 800**  
the king-size sow panel



**SWING 300 x 600**  
the adjusting panel



**SWING 400 x 600**  
traditional panel with extra foot  
holds and rounded ridges



**SWING 500 x 600**  
for extra-wide sow areas

## Technical data

|                       | SWING 300 x 600 |           | SWING 400 x 600 |           | SWING 500 x 600 |           | SWING TITAN 600 x 800 |           |
|-----------------------|-----------------|-----------|-----------------|-----------|-----------------|-----------|-----------------------|-----------|
| Item no.              | 00148           | 00147     | 00145           | 00149     | 00135           | 00137     | 00111                 | 00151     |
| Measurements in mm*   | 300 x 600       | 300 x 100 | 400 x 600       | 400 x 100 | 500 x 600       | 500 x 100 | 600 x 800             | 600 x 100 |
| Opening width         | 10 mm           |           |                 |           |                 |           |                       |           |
| Percentage of opening | 29 %            |           |                 |           |                 |           |                       |           |
| Animal weight         | 350 kg          |           |                 |           |                 |           |                       |           |

\* Dimensions in width x length

Farrowing





# Variations of the SWING sow panel system

The different SWING series panels allow the varying laying requirements for the sows' shoulders, teats and rear legs to be accommodated ideally.



**SWING Soft**  
perfect step-safety



**SWING G**  
solid reclining area panel



**SWING G 3%**  
300 x 600 mm



**SWING G 5 %**  
low perforated panel for shoulder and teats



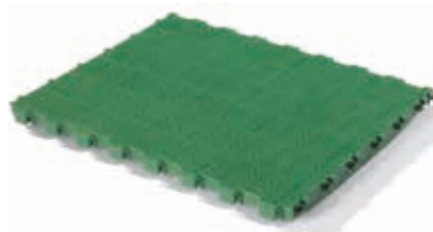
**SWING G 10 %**  
low perforated panel for shoulder and teats



**SWING GR**  
grooved panel for laying area and walkways with drainage holes



**SWING GR**  
grooved panel for laying area and walkways



**TITAN GR**  
completely solid panel

### Technical data

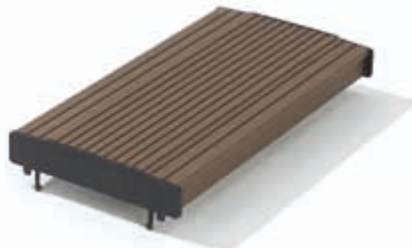
|                       | SWING Soft | SWING G   | SWING G 3% | SWING G 5% | SWING G 10% | SWING GR  | SWING GR  | TITAN GR  |
|-----------------------|------------|-----------|------------|------------|-------------|-----------|-----------|-----------|
| Item no.              | 01145      | 00146     | 00132      | 00133      | 00150       | 00142     | 00341     | 00339     |
| Measurements in mm*   | 400 x 600  | 400 x 600 | 300 x 600  | 400 x 600  | 400 x 600   | 400 x 600 | 400 x 100 | 600 x 800 |
| Opening width         | 10 mm      | -         | 10 mm      | 10 mm      | 10 mm       | -         | -         | -         |
| Percentage of opening | 29 %       | 0,7 %     | 3 %        | 5 %        | 10 %        | 0,7 %     | 0 %       | 0%        |
| Animal weight         | 350 kg     |           |            |            |             |           |           |           |

\* Dimensions in width x length

# Concrete inlets

NEW

The concrete and ceramic inlets can be integrated in the MIK flooring system by using the support strips for inlets. They can have a cooling and hoof trimming effect.



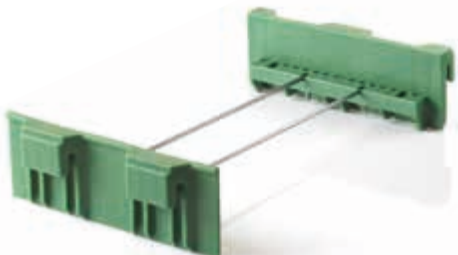
|                       | BT 60 P | BT 60 S | BT 60 G | BT 40 S | BT 40 G | Ceramic inlet |
|-----------------------|---------|---------|---------|---------|---------|---------------|
| Item no.              | 39014   | 39015   | 39013   | 39016   | 39018   | 39060         |
| Measurements in cm*   | 60 x 60 | 60 x 60 | 60 x 60 | 40 x 60 | 40 x 60 | 40 x 20       |
| Height mm             | 50      | 40      | 50      | 40      | 40      | -             |
| Opening width         | 13 mm   | 8 mm    | -       | 8 mm    | -       | **            |
| Percentage of opening | 7 %     | 3 %     | 0 %     | 3 %     | 0 %     | 0 %           |

\* Dimensions in width x length \*\* an opening of 10 mm occurs by laying

# Support strips for inlets

### Benefits

- available in two different heights
- fitting wire bows in different lengths



### Technical data

|          | Support strip 40 mm | Support strip 50 mm |
|----------|---------------------|---------------------|
| Item no. | 04200               | 04201               |
| Length   | 200 mm              |                     |





# CAST panel system

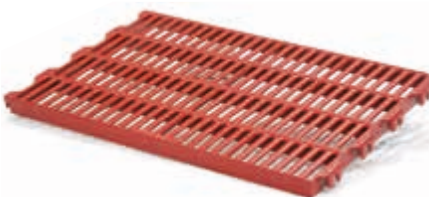
An extensive assortment of cast panels matching the MIK flooring system is available to complement the plastic panels. The CAST panels feature the same, long-proven surface with the familiar foot holds and give even sows with fundamental weaknesses the necessary grip when standing up and lying down.



**CAST C 400 x 600**  
the standard cast panel



**CAST C 400 x 600 G**  
solid surface with drainage opening



**CAST C 600 x 400**  
possible combination with  
SWING 600 x 800



**CAST C 600 x 400 G**  
solid surface with drainage holes

## Benefits

- stable standing also for problem sows
- optimised surface geometry
- ideally combinable with the MIK panel systems
- post-installation in MIK flooring possible

Other sizes available on request.

## Technical data

|                       | CAST C 400 x 600 | CAST C 400 x 600 G | CAST C 600 x 400 | CAST C 600 x 400 G |
|-----------------------|------------------|--------------------|------------------|--------------------|
| Item no.              | 00510            | 00515              | 00520            | 00525              |
| Measurements in mm*   | 400 x 600        | 400 x 600          | 600 x 400        | 600 x 400          |
| Opening width         | 10 mm            | –                  | 10 mm            | –                  |
| Percentage of opening | 35 %             | 3 %                | 35 %             | 3 %                |
| Animal weight         | 350 kg           |                    |                  |                    |

\* Dimensions in width x length



Farrowing

# THERMO heating systems



Latest heating  
technology in king-size  
dimensions

## Product benefits

- high energy efficiency
- homogeneous heat distribution
- warm water or electric panel

Farrowing





# THERMO W 400 x 600

The warm water operated THERMO W 400 x 600 allows a flexible arrangement of panels, is very suitable for the cost conscious remodelling of existing installations and has greatly proved itself as a reliable heating in nursery systems.



**THERMO W 400 x 600**  
the water classic

## Technical data

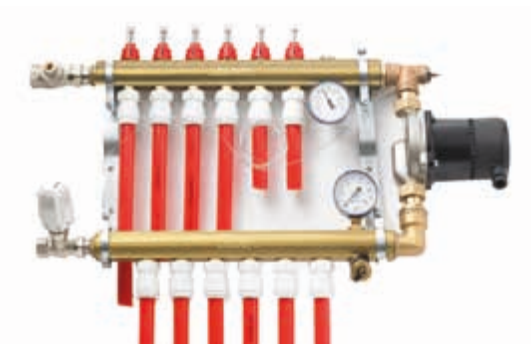
|                             | THERMO W 400 x 600 |
|-----------------------------|--------------------|
| Item no.                    | 00152              |
| Measurements in mm*         | 400 x 600          |
| Average power** consumption | 60 Watt            |

\* Dimensions in width x length  
\*\* Average values in running operation. Heat exchanger is required.

## Benefits

- slip resistant surface with recesses
- flexible arrangement of heating panels
- proven technology for more than 25 years
- compact heating panel

## Accessories: Control system for THERMO W



DoJet control unit with 2 – 6 circuits



WTP 30 heat exchanger



Expansion tank

# THERMO W XXL

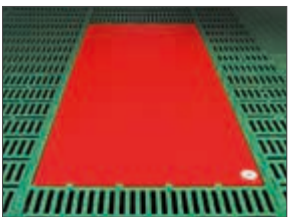
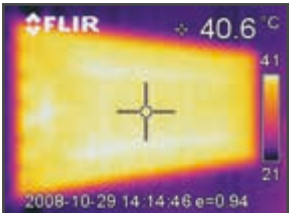
Thanks to its extra-large size, the THERMO W XXL only requires a few connection accessories, combining high energy efficiency with an absolutely homogeneous heat distribution.



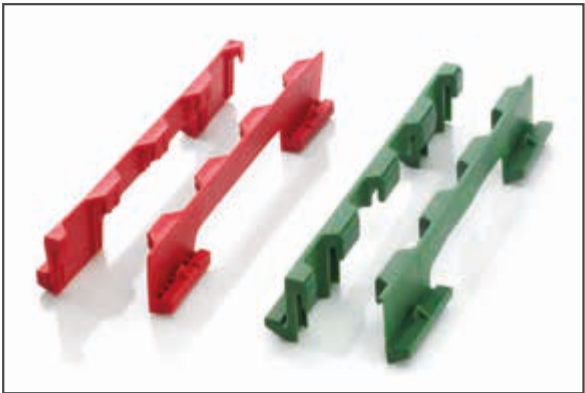
**THERMO W XXL**  
trendsetting heating system

## Benefits

- air free filling for ideal heat distribution
- reliable anti-slip surface for safe movement
- slightly concave surface for good drainage
- high resting comfort
- operation without seperate heat-exchanger
- fast warming – and slow cooling process
- optimum hygiene with a completely closed panel
- revolving drip edge



THERMO W XXL installed



Hook strip: available for all MIK systems and for universal use (red set)

## Technical data

|                             | THERMO W 400 x 1200 | THERMO W 500 x 1200 | THERMO W 600 x 1200 | THERMO W 500 x 1600 |
|-----------------------------|---------------------|---------------------|---------------------|---------------------|
| Item no.                    | 03990               | 03984               | 03985               | 04970               |
| Measurements in mm*         | 400 x 1200          | 500 x 1200          | 600 x 1200          | 500 x 1600          |
| Average power** consumption | 55 Watt             | 63 Watt             | 73 Watt             | 105 Watt            |

\* Dimensions in width x length  
\*\* Average values in running operation.



# THERMO E 400 x 600

The electrically operated THERMO E 400 x 600 allows a flexible arrangement of panels, is very suitable for the cost conscious remodelling of old installations and has greatly proved itself as a reliable heating in nursery systems.



**THERMO E 400 x 600**  
the electro-classic

## Technical data

|                             | THERMO E 400 x 600                          |
|-----------------------------|---|
| Item no.                    | 00115: with sensor<br>00114: without sensor |
| Measurements in mm*         | 400 x 600                                   |
| Average power** consumption | 55 Watt                                     |

\* Dimensions in width x length  
\*\* Average values in running operation.

## Benefits

- anti-slip knobbled surface
- flexible arrangement of thermal nests
- cost-efficient solution for small operations
- compact heating panel

## Accessories: Control system for THERMO E



TR-A analogue control unit



TR-D digital control unit



Contactor



protective box for TR-A



protective box for TR-A and TR-D

# THERMO E XXL

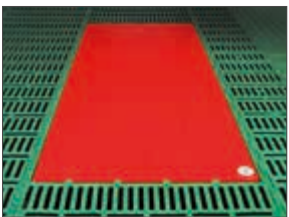
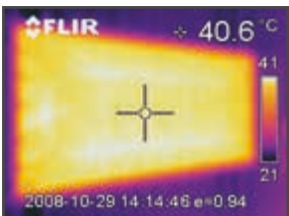
The electrically heated THERMO E offers the advantages of the THERMO W even where no warm water heating equipment is available or desired.



**THERMO E XXL**  
Energy-efficient heating system

## Benefits

- uniform heat distribution for uniquely comfortable lying area
- approved anti-slip surface for high step-safety
- slightly concave surface for good drainage
- warms up quickly and releases heat slowly
- revolving drip edge
- high resting comfort
- optimum hygiene with a completely closed panel



THERMO E XXL installed



Hook strip: available for all MIK systems and for universal use

## Technical data

|                             | THERMO E 400 x 1200                         | THERMO E 500 x 1200                         | THERMO E 600 x 1200                         |
|-----------------------------|---|---|---|
| Item no.                    | 04951: with sensor<br>04950: without sensor | 04953: with sensor<br>04952: without sensor | 04955: with sensor<br>04954: without sensor |
| Measurements in mm*         | 400 x 1200                                  | 500 x 1200                                  | 600 x 1200                                  |
| Average power** consumption | 63 Watt                                     | 73 Watt                                     | 105 Watt                                    |

\* Dimensions in width x length  
\*\* Average values in running operation.







Discover the secret of  
successful piglet rearing

Nursery



Product benefits

- slip-resistant surface
- self-cleaning
- compatible with all MIK heating systems

The CHESS is the innovation regarding nursery panels. The worldwide unique slot base arrangement with its chess board pattern ensures an optimum step-safety in every direction of movement.

Benefits

- chess board design surface for unique step safety
- first class self-cleaning
- up to 50% saving potential of the support beam sytem
- easy and fast installation



**CHESS**  
the piglet stopper  
in XL size



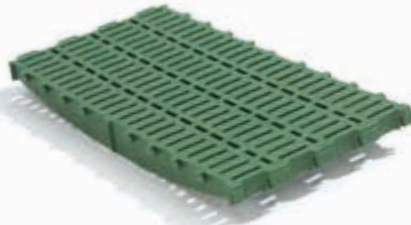
**CHESS 600 x 600**  
the piglet stopper



**DIAMANT G**  
slightly perforated surface for  
installation in lying and feeding areas



**TRAPPER GR**  
completely solid panel e.g.  
for walkways



**SMARAGD**  
the wean-to-finish panel



**SMARAGD G 3%**  
low perforated surface for lying- and  
feeding areas



**TITAN GR**  
completely solid panel for walkways

Technical data

|                       | CHESS<br>600 x 600 | CHESS<br>800 x 600       | DIAMANT<br>G      | TRAPPER<br>GR | TITAN GR  | SMARAGD   | SMARAGD<br>G 3% |
|-----------------------|--------------------|--------------------------|-------------------|---------------|-----------|-----------|-----------------|
| Item no.              | 00336              | 00330 /<br>00331         | 00320             | 00318         | 00339     | 00316     | 00327           |
| Measurements in mm*   | 600 x 600          | 800 x 600 /<br>800 x 100 | 800 x 400         | 800 x 400     | 600 x 800 | 800 x 400 | 800 x 400       |
| Opening width         | 10 mm              | 10 mm                    | 10 mm             | –             | –         | 10 mm     | 10 mm           |
| Percentage of opening | 39 %               | 39 %                     | Drainage<br>< 10% | 0 %           | 0 %       | 27 %      | 3 %             |
| Animal weight         | 90 kg              | 60 kg                    | 60 kg             | 200 kg        | 350 kg    | 150 kg    | 150 kg          |

\* Dimensions in width x length

NEW

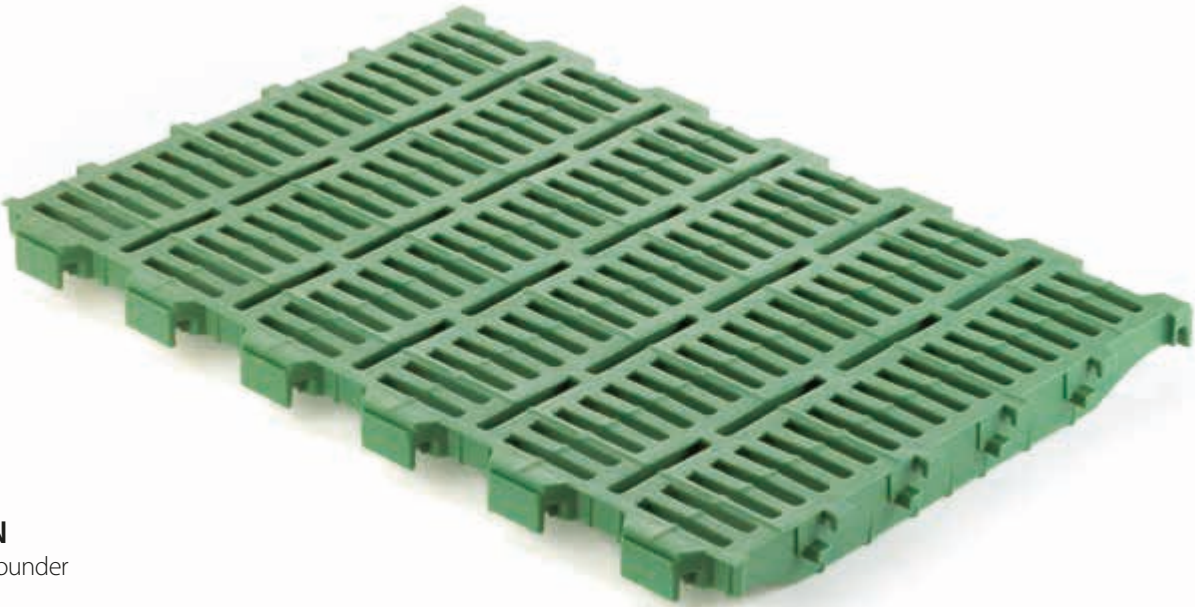
Nursery





# RUBIN

RUBIN panels are used from farrowing to pre-finishing. They offer excellent movement security, first class comfort, as well as good hygienic conditions for healthy growth in the different development stages.



**RUBIN**  
the all-rounder

### Benefits

- optimal self cleaning creates excellent hygienic conditions
- pleasant place to rest due to smoothly profiled surface
- easy combination with the MIK THERMO-System
- excellent grip for piglets while suckling due to longitudinal openings and small ridges

### Variations



**RUBIN G**  
solid panel for lying area



**RUBIN GR**  
completely solid panel

### Technical data

|                       | RUBIN<br>200 x 300 | RUBIN<br>300 x 600 | RUBIN<br>400 x 600 | RUBIN<br>500 x 600    | RUBIN G       | RUBIN GR<br>400 x 600 | RUBIN GR<br>500 x 600 | Gully             |
|-----------------------|--------------------|--------------------|--------------------|-----------------------|---------------|-----------------------|-----------------------|-------------------|
| Item no.              | 00091              | 00105              | 00104              | 00103 / 00138         | 00106         | 00108                 | 00219                 | 00129             |
| Measurements in mm*   | 200 x 300          | 300 x 600          | 400 x 600          | 500 x 600 / 500 x 100 | 400 x 600     | 400 x 600             | 500 x 600             | Opening: 98 x 312 |
| Opening width         | 10 mm              | 10 mm              | 10 mm              | 10 mm                 | 10 mm         | -                     | -                     | -                 |
| Percentage of opening | 35 %               | 38 %               | 38 %               | 38 %                  | Drainage <10% | 0%                    | 0%                    | -                 |
| Animal weight         | 110 kg             |                    |                    |                       |               |                       |                       |                   |

\* Dimensions in width x length



Nursery

# Finishing panel systems



The versatile  
heavy-duty panel

## Product benefits

- saving supporting beams
- extremely durable, and easy to clean
- the ideal combination with concrete slatted floors

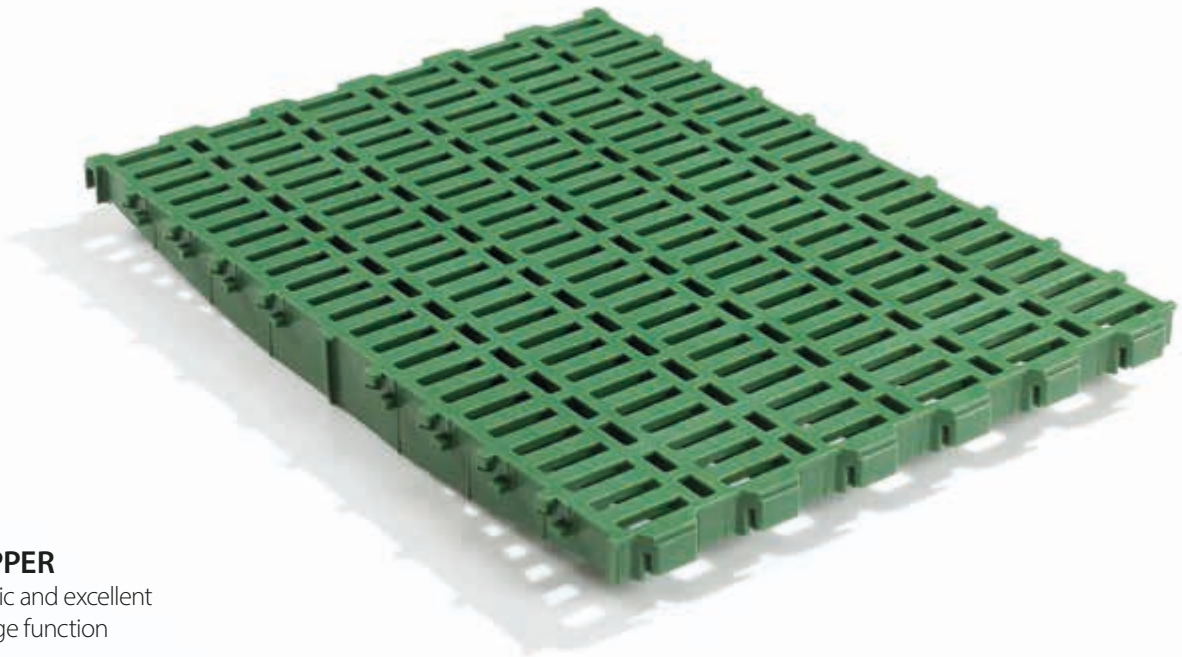
Finishing





# TRAPPER

The TRAPPER distinguishes itself in pre-finishing and finishing because of its high bearing capacity and first class self-cleaning.



**TRAPPER**  
hygienic and excellent  
drainage function

### Benefits

- high bearing load and stability
- 14 mm opening width for optimum hygiene
- temperature neutral compared to concrete slats
- ideal for wean-to-finish systems



**TRAPPER GR**  
completely solid panel e.g. for walkways

### Technical data

|                       | TRAPPER   | TRAPPER XL | SMARAGD   | TRAPPER GR | SMARAGD G 3% |
|-----------------------|-----------|------------|-----------|------------|--------------|
| Item no.              | 00313     | 00326      | 00316     | 00318      | 00327        |
| Measurements in mm*   | 800 x 400 | 800 x 600  | 800 x 400 | 800 x 400  | 800 x 400    |
| Opening width         | 14 mm     | 14 mm      | 10 mm     | –          | 10 mm        |
| Percentage of opening | 35 %      | 35 %       | 27 %      | 0 %        | 3 %          |
| Animal weight         | 200 kg    |            |           |            | 150 kg       |

\* Dimensions in width x length



“Why did I install  
flooring from MIK?”

“Because my pigs will still be able to walk  
on it safely in 20 years time!”

Werner Ostkotte – Farmer, 550 Sows



■ “We have been using MIK flooring the past 20 years. Even after that period of time, the panels’ condition is still as good that we can reuse them in some of our new pens. It’s obvious that you don’t change the manufacturer after such an experience.”



Calf panels & milking parlour flooring



Plastic for calves – the economic alternative

Calves and milking parlours



Product benefits

- more persistent than wood
- more convenient and cheaper than litter
- more hygienic than concrete slats

PRÄRIE, TRAPPER & STEPPER

The temperature-neutral PRÄRIE and TRAPPER are increasingly used in calf rearing as an economic and practical alternative to concrete or wooden panels or beddings. The TRAPPER and STEPPER panels offer the milking farmers a safe and ergonomic workplace arrangement in addition to easy use and cleaning.

Thanks to its excellent load-bearing characteristics, **PRÄRIE** is extremely suitable where animals are kept in groups. Its special surface design offers good foot holding and keeps the panels dry and clean.

**TRAPPER** is mainly used in individual calf boxes and gives calves a high stability performance combined with best hygienic conditions. It offers the milkers welcome health care during the working day in addition to step safety and easy cleaning.  
The **STEPPER's** special design with its knobbed surface structure guarantees more grip and thus provides safer working conditions.



PRÄRIE



TRAPPER



STEPPER  
with knobbed surface

Benefits

- stable and longer lasting than timber
- very hygienic due to 20 mm opening and closed molecular material structure with high percentage of opening
- eco-friendly substitution for tropical hard wood
- easy to use and install
- lower operating costs due to savings in bedding and its storage
- underfloor ventilation with warm air is also possible
- anti-skid surface
- slightly elastic, it is gentle to back and joints

Technical data

|                       | PRÄRIE    | TRAPPER  | STEPPER   | SMARAGD   |
|-----------------------|-----------|--|---|-----------|
| Item no.              | 00131     | green: 00313<br>blue: 00314<br>opal green: 00303 | green: 00312<br>blue: 00310<br>opal green: 00308<br>white: 00309<br>grey: 00307 | 00316     |
| Measurements in mm*   | 400 x 400 | 800 x 400  | 800 x 400   | 800 x 400 |
| Opening width         | 20 mm     | 14 mm  | 14 mm   | 10 mm     |
| Percentage of opening | 29 %      | 35 %   | 35 %  | 27 %      |
| Animal weight         | 350 kg    | 200 kg   |   |           |

\* Dimensions in width x length





# MIK Calf box

The MIK calf box convinces by the easy handling and the stable construction.  
The use of MIK calf panels and dividing boards is the basis for a hygienic and healthy calf housing.



**Calf box**  
hygienic, flexible, stable

## Benefits

- four swivelling wheels
- easy to clean
- five different slats can be used
- calf can be fixed by front door
- holders for pan and drinking bin included
- stable galvanized frame
- adjustable roof
- partable front door
- double bin holder
- also available as double-, triple- and fourfold box

## Technical data

|                        | Single box        | Single box XL      | Double box         | Double box XL      |
|------------------------|-------------------|--------------------|--------------------|--------------------|
| Item no.               | K-00001           | K-00002            | K-00003            | K-00004            |
| Outer dimensions in mm | 980 x 1550 x 1250 | 1080 x 1850 x 1250 | 1920 x 1550 x 1250 | 2120 x 1850 x 1250 |
| Inner dimensions in mm | 900 x 1200        | 1000 x 1600        | 1800 x 1200        | 2000 x 1600        |

configuration of the box according to arrangement



Calves and milking parlours

# Sheep & goat panel systems



Ideal grip with  
knobbed surface

## Product benefits

- proven knobbed surface
- outstanding step-safety
- durable, clean and hygienic

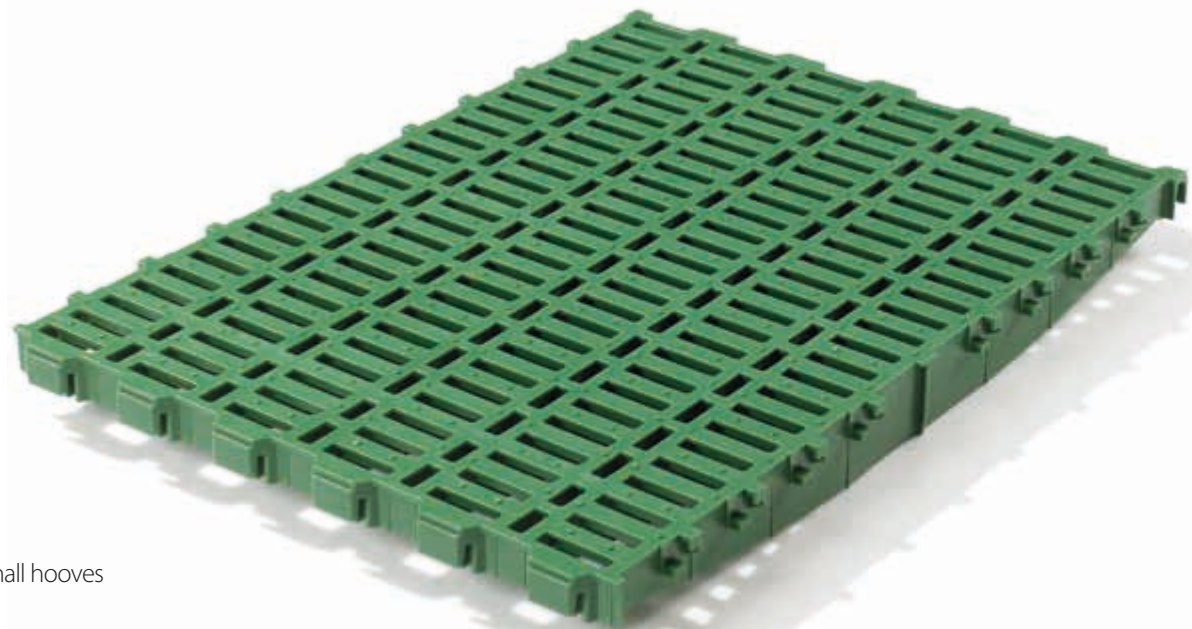
Sheep & goat farming





# STEPPER

The STEPPER panel was developed especially for sheep and goats. Its proven surface provides the very best traction and stability. High supporting beam savings due to 800 mm width. STEPPER convinces by high stability and durability.



**STEPPER XL**  
developed for small hooves

## Benefits

- knobbed surface generates unique slide prevention and safe grip
- excellent self-cleaning due to 14 mm wide openings
- stability, durability and resistance
- allows moving safely and lying comfortably
- dry and temperature-neutral for healthier animals
- reduction of bedding, storage costs and labour input



knobbed structure for perfect grip

## Technical data

|                       | TRAPPER   | TRAPPER XL | STEPPER   | STEPPER XL |
|-----------------------|-----------|------------|-----------|------------|
| Item no.              | 00313     | 00326      | 00312     | 00325      |
| Measurements in mm*   | 800 x 400 | 800 x 600  | 800 x 400 | 800 x 600  |
| Opening width         | 14 mm     |            |           |            |
| Percentage of opening | 35%       |            |           |            |
| Animal weight         | 200 kg    |            |           |            |

\* Dimensions in width x length



Sheep & goat farming

# MIK Poultry slat



Increased feet comfort through rounded openings

## Product benefits

- outstanding step-safety
- durable, clean and hygienic

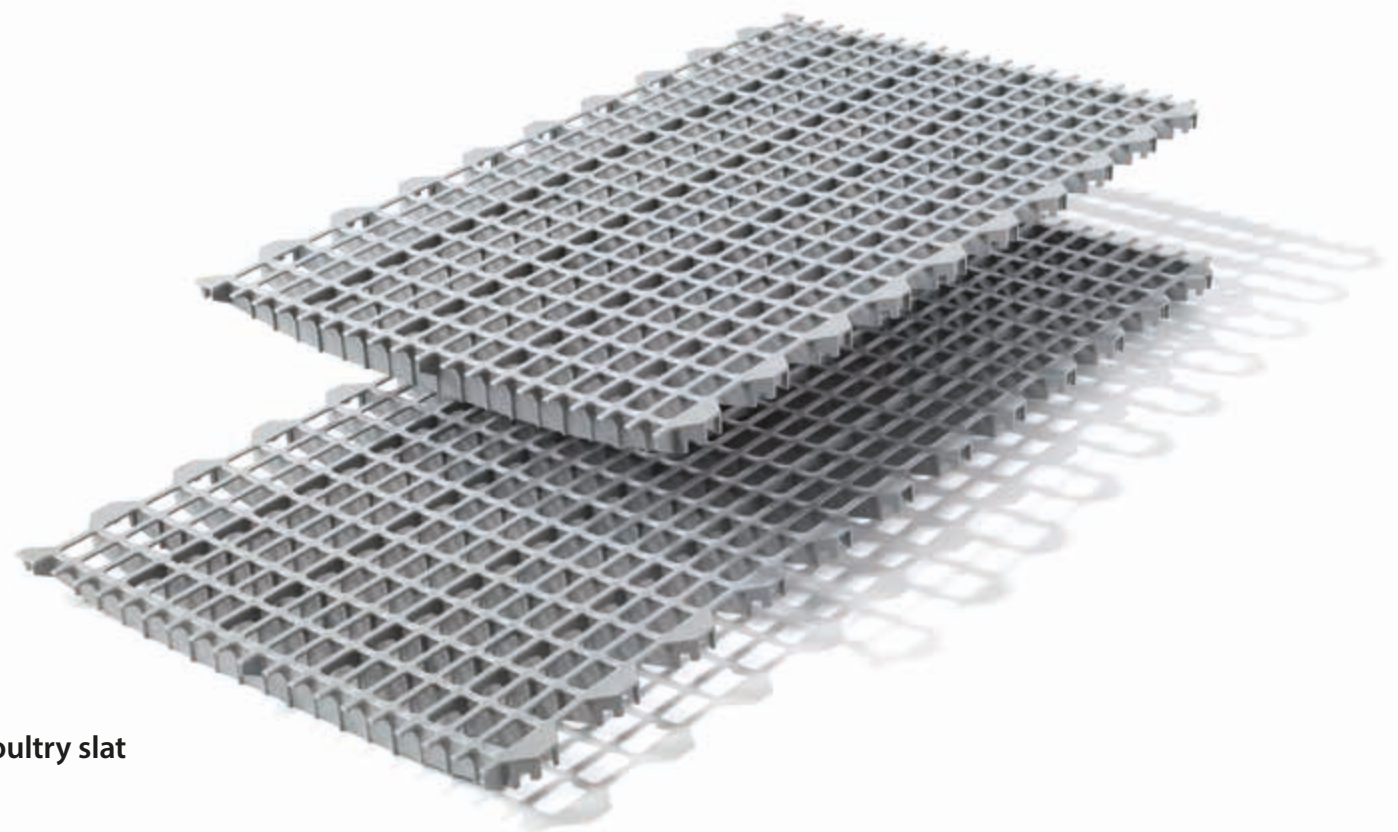
## Poultry slat





# MIK Poultry slat

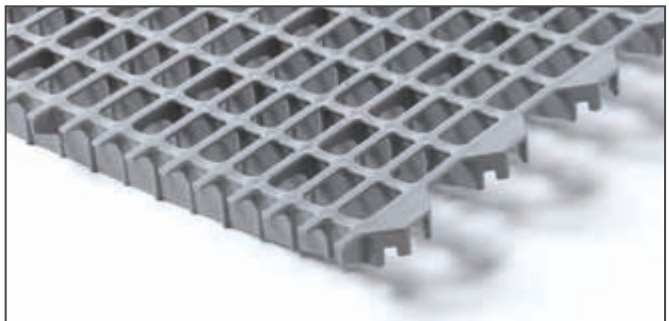
The surface structure is characterized by a self cleaning effect and provides optimal grip for the animals.



Poultry slat

Benefits

- good manure passage through arched bridges and an open surface
- high load bearing capacity and longevity
- simple and fast assembly
- easy to clean
- comfortable to walk on and reduced possibility of injury due to rounded edges
- avoidance of mite infestation through open style support bearer tabs



Increased feet comfort through rounded openings

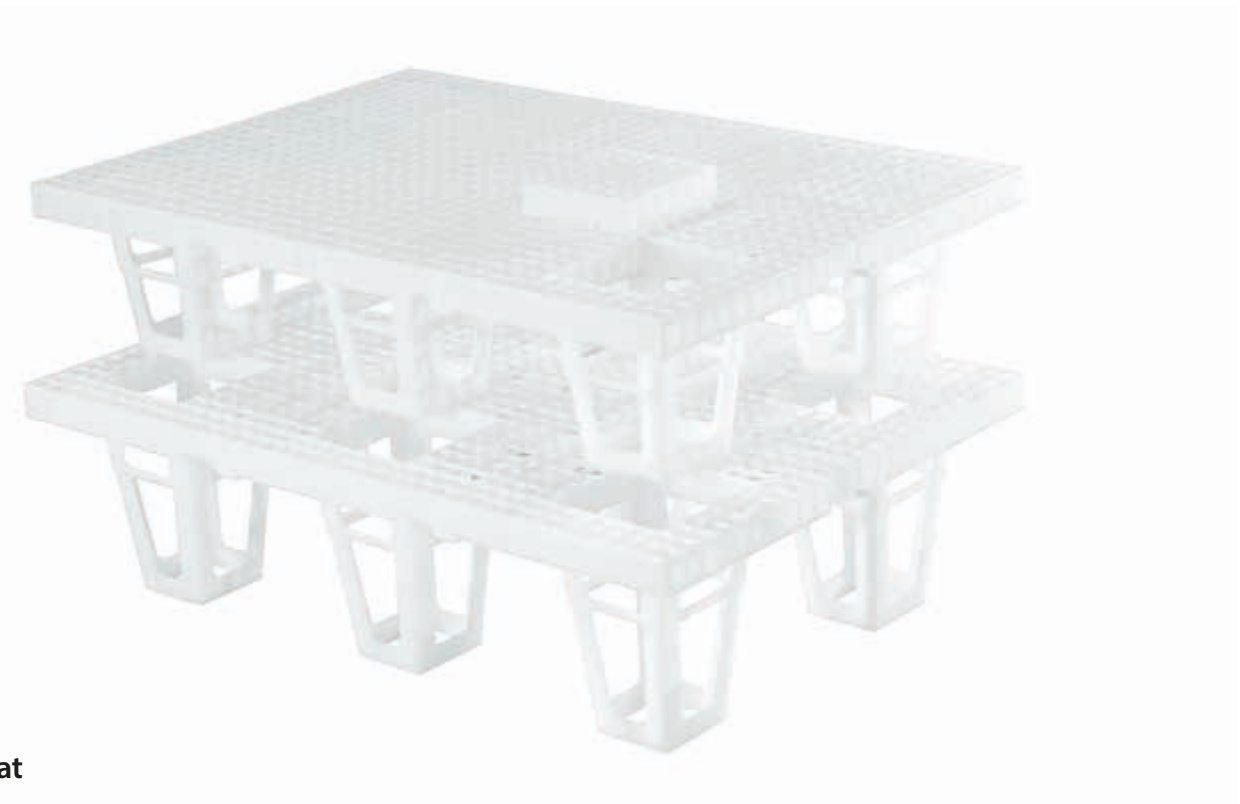
Technical data

|                       | Poultry slat 1000                             | Poultry slat 1200                             |
|-----------------------|---|---|
| Item no.              | natural: 40011<br>grey: 40010<br>black: 40012 | natural: 40021<br>grey: 40020<br>black: 40022 |
| Measurements in mm*   | 580 x 1000                                    | 580 x 1200                                    |
| Opening width         | 42 x 22 mm                                    |   |
| Percentage of opening | 48 %  |   |

\* Dimensions in width x length

# Broiler slat

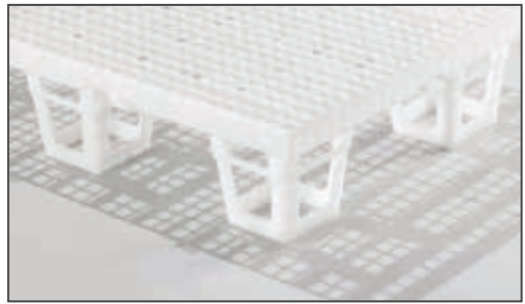
The MIK broiler slat is designed to keep broiler without using any litter. Due to the surface design the flooring offers a perfect animal friendly and clean solution.



Broiler slat  
with leg

Benefits

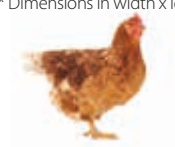
- available with leg system for use with support beams
- leg type available in 3 different heights
- flooring ensures to have no blisters on breast and always clean birds
- easy and fast assembling / disassembling
- broiler slats with leg can be stacked into each other



Technical data

|                       | Broiler slat leg type  | Broiler slat support type |
|-----------------------|--|---------------------------|
| Item no.              | Height 200 mm: 40030<br>Height 250 mm: 40031<br>Height 300 mm: 40032 | 40040                     |
| Measurements in mm*   | 914 x 609  | 1219 x 609                |
| Opening width         | 18.7 x 20 mm   | 19.6 x 20.6 mm            |
| Percentage of opening | 61 %   | 59.5 %                    |

\* Dimensions in width x length



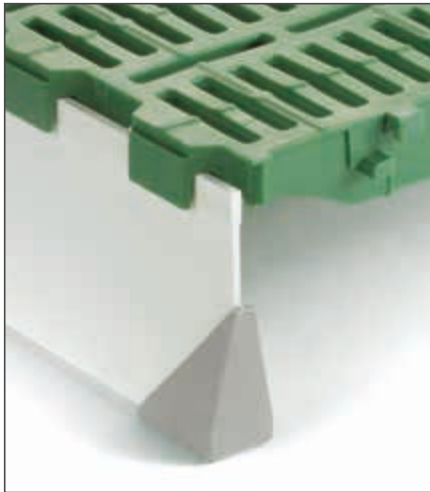




The stable and long-lasting support system made of GRP

Product benefits

- delta profile for excellent stability
- non-corroding, resistant to acids and leaches
- simple and quick installation



The DUO support beam system is the basis for the entire panel system. The beams made of composite fiberglass (GRP) ensure a stable and durable panel support. Even under difficult construction conditions, our wide accessory assortment guarantees easy and fast assembling.

**DUO Protect**  
hygienic protective cap for support beams



**DUO**  
solid basis

Benefits

- high bearing load and stability due to delta-profile
- special DUO edge profile for additional interlocking with panel
- support leg system for wider spanning
- acid and alkali resistant
- first class self cleaning
- no corrosion

Technical data

|                            | DUO L       | DUO XL      |
|----------------------------|-------------|-------------|
| Item no.                   | 22000       | 20000       |
| Height x Width             | 120 x 29 mm | 150 x 29 mm |
| Total installation height* | 140 mm      | 170 mm      |

\*with panel and DUO Protect

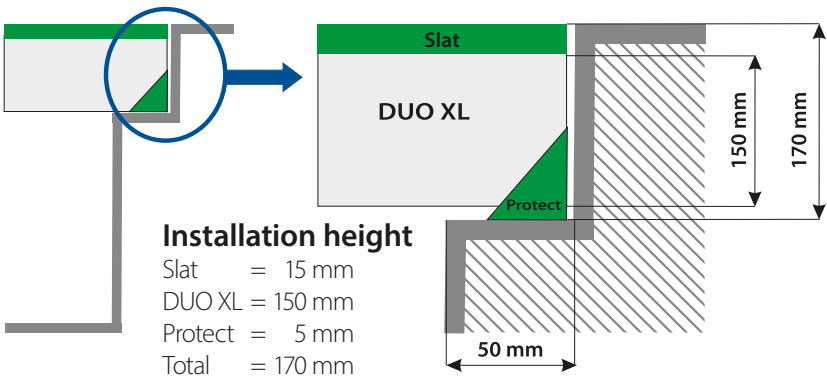
Accessories



**DUO Protect**  
hygienic protective cap for supporting ledges



**Stainless steel wall clamp**  
hygienic assembling solution



**DUO supporting leg set**  
PVC piping up to 500 mm  
GRP piping up to 1000 mm



# Penning systems



Our easy-to-use penning system

## Product benefits

- for single handed use
- optimised geometry for excellent stability
- simple and quick installation

# Penning systems

MIK offers different heights of penning systems depending on the use in farrowing, nursery or finishing units. The large number of profiles and single parts makes this system extremely flexible and allows it to be adapted to all pen and room sizes. It is extremely important that pens are easy to handle and can be securely locked. The MIK penning system combines both of these aspects.



**Floor anchor, small**  
Item no.: A-00005



**Lift stop door handle set**  
Item no.: A-00050



**Stabilisator**  
750: Item no.: A-07545



**U-profile**  
500 x 35: Item no.: A-05005  
750 x 35: Item no.: A-07505



**Door profile, left**  
500 x 35: Item no.: A-05010-L  
750 x 35: Item no.: A-07510-L



**Door profile, right**  
500 x 35: Item no.: A-05010-R  
750 x 35: Item no.: A-07510-R



**Middle post**  
500 x 35: Item no.: A-05015  
750 x 35: Item no.: A-07515



**Corner post**  
500 x 35: Item no.: A-05020  
750 x 35: Item no.: A-07520



**Wall post**  
500 x 35: Item no.: A-05025  
750 x 35: Item no.: A-07525



**Corridor post**  
750 x 35: Item no.: A-07540



**Corner profile**  
500 x 35: Item no.: A-05030  
750 x 35: Item no.: A-07530



**T-profile**  
500 x 35: Item no.: A-05035  
750 x 35: Item no.: A-07535



**Delta profile**  
750: Item no.: A-07550

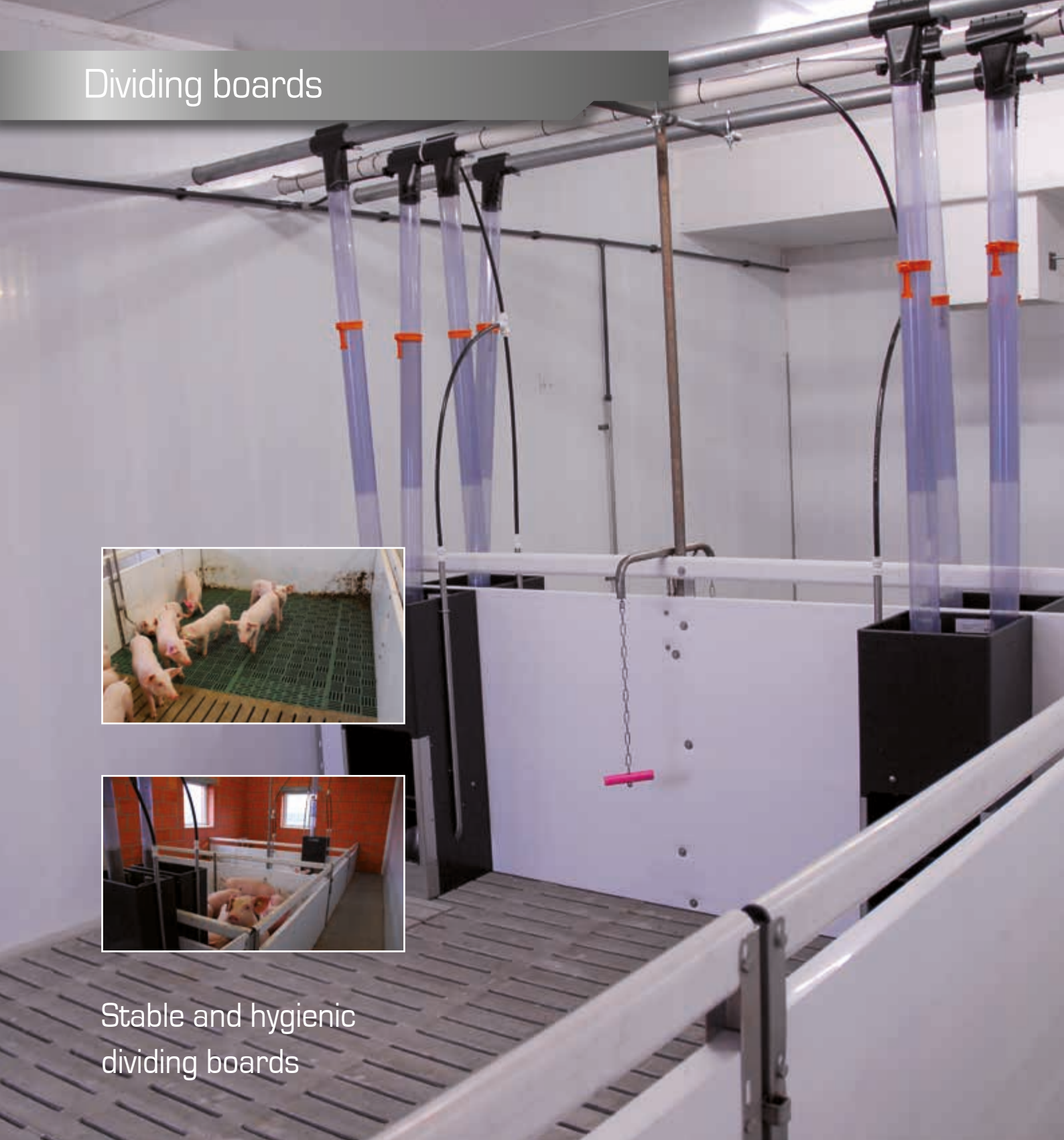


**Angle post 750**  
750: Item no.: A-07555

Further heights on request



# Dividing boards



Stable and hygienic  
dividing boards

## Product benefits

- smooth surfaces for optimum hygiene
- acid and alkali resistant
- easy cleaning

# Dividing boards

MIK PVC boards in different sizes and colours can optionally be delivered with tongues and grooves or with smooth sides. They can also be produced in the desired lengths for your own specific project.

## Benefits

- specific lengths available
- top quality material for excellent stability and very strong walls
- resistant to disinfectants, acids and alkalides
- standard colour grey and white, other colours upon request
- easily installation



## Technical data

| Profile type | 250 x 35        | 500 x 35                   | 600 x 35   | 750 x 35*  | 850 x 35*  | 1000 x 35* | 500 x 50   | Oval profile    |
|--------------|-----------------|----------------------------|------------|------------|------------|------------|------------|-----------------|
| Height mm    | 250             | 500                        | 600        | 750        | 850        | 1000       | 500        | 70              |
| Width mm     | 35              | 35                         | 35         | 35         | 35         | 35         | 50         | 35              |
|              | tongue & groove | tongue & groove flat sides | flat sides | flat sides | flat sides | flat sides | flat sides | tongue & groove |

L-, U- and H- profiles and different endcaps also available.  
\* Available in greater wall thickness



BISTRO feeders



The BISTRO feeder for your pigs

Product benefits

- variable feed settings
- easy cleaning
- stable construction for reliable functionality

BISTRO W feeders

**BISTRO W 100**

- high, and tapered cover for optimal feed hygiene and large openings for the feed inlet
- large translucent plastic hopper makes checking level of feed easy
- infinitely variable adjustment of feed supply
- stainless steel stirrer ensures continuous feed flow
- longevity through stainless steel frame
- oval hopper to prevent feed bridging
- long stainless steel water pipes; optionally available as a circular pipe
- robust bite protection for the plastic hopper
- standard supply with two nipple drinkers
- high quality stainless steel trough with drain hole and high trough edge
- L-profile to enable installation in pen partitions
- solid base angle for stability

**BISTRO W 90**  
100 % stainless steel – available

Benefits

- stainless steel trough
  - includes two drinkers
  - optional with circulating piping
  - up to 40 animals per feeder
  - stainless steel bite protection
- cover for automatic and manual refilling
  - infinitely adjustable setting
  - large stable ground anchor
  - suitable for meal and pellets

Technical data

|             | BISTRO W 90 P | BISTRO W 90 F | BISTRO W 100 P | BISTRO W 100 F |
|-------------|---------------|---------------|----------------|----------------|
| Item no.    | 10092         | 10096         | 10102          | 10106          |
| Volume      | 90 L          | 90 L          | 100 L          | 100 L          |
| Application | piglets       | finisher      | piglets        | finisher       |





Benefits

- easy to use and accurate adjustment system
- robust stainless steel slide for feed level adjustment
- large and reinforced front opening for medication or feed additives
- easily unassembled for cleaning
- reinforced drop cone interlocking
- cone-shaped feed release



**BISTRO Drop Feeder**  
for easy and exact feed adjustment

Technische Daten

|              | VD 6            |                  |              | VD 9            |                  |              |
|--------------|-----------------|------------------|--------------|-----------------|------------------|--------------|
|              | Straight outlet | Eccentric outlet | Double inlet | Straight outlet | Eccentric outlet | Double inlet |
| Item no.     | 10155           | 10155-EX         | 10155-DE     | 10160           | 10160-EX         | 10160-DE     |
| Height in mm | 395             |                  |              | 565             |                  |              |
| Ø mm         | 200             |                  |              |                 |                  |              |
| Volume litre | 6               |                  |              | 9               |                  |              |

Additionally to the BISTRO Drop Feeders, several small parts are available to assure the adaption of the feeding system to your individual needs.



**Double inlet**  
Item no.: 10151  
for filling of two feed types

**Pipe adapter 50 mm**  
Item no.: 10153

**Pipe adapter 80 mm**  
Item no.: 10154



**Eccentric outlet**  
Item no.: 10164



**90° adapter for inlet**  
Item no.: 10150



**Water pipe holder**  
Item no.: 10152  
for water pipes 32mm



# BISTRO Starter

BISTRO Starter – animal friendly, robust and flexible mountable feeding pan in the well-known MIK quality.

### Benefits

- made of high quality plastic
- 3,5 liter capacity
- large diameter
- robust divider for 6 feeding places
- suitable for dry feed, milk and water
- no wastage or spoiling of feed thanks to high pan sides and solid fixing to the flooring
- long lasting stable spring



**BISTRO Starter**  
the large feeding pan

### Technical data

|                     | BISTRO Starter with divider | BISTRO Starter without divider |
|---------------------|-----------------------------|--------------------------------|
| Item no.            | 10302                       | 10303                          |
| Measurements in mm* | Ø 295                       |                                |
| Edge height         | 61                          |                                |
| Volume litre        | 3.5                         |                                |
| Feeding places      | 6 pieces                    |                                |

\* Dimensions in width x length

# BISTRO Corner

BISTRO Corner – a long lasting, strenghtened and watertight solution for chain feeding systems.



**BISTRO Corner**  
robust self-cleaning corner

### Benefits

- torsion-resistant corner
- fully framed groove guide with rubber seal
- completely watertight casing
- sealed bearing pin
- shouldered socket to avoid overinsertion of the conveyor tubes
- self cleaning geometrical spokes
- disc retainer avoids the stop of the wheel
- high quality cast iron wheel
- longlasting stable stainless-steel spring



### Technical data

|                     | Corner 90° | Seal        | Reinforcement ring |
|---------------------|------------|-------------|--------------------|
| Item no.            | F-11143    | F-11150-SET | F-11232            |
| Pipe measurement mm | Ø 60 mm    | –           | –                  |





Final steps to a perfect barn

Product benefits

- easy assembly
- intelligent solutions
- occupation for pigs

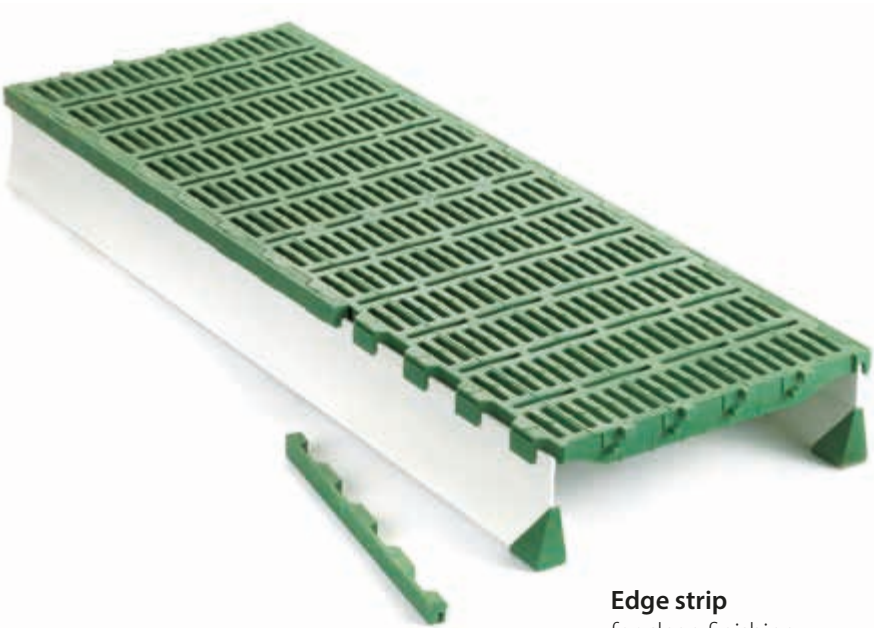
Edge strips

The edge strips provide a clean finish, ensuring a proper closing of expansion gaps and smooth connection to concrete surfaces.



expansion gap with edge strip

| Technical data  |            |
|-----------------|------------|
|                 | Edge strip |
| Item no.        | 00191      |
| Measurements mm | 400        |

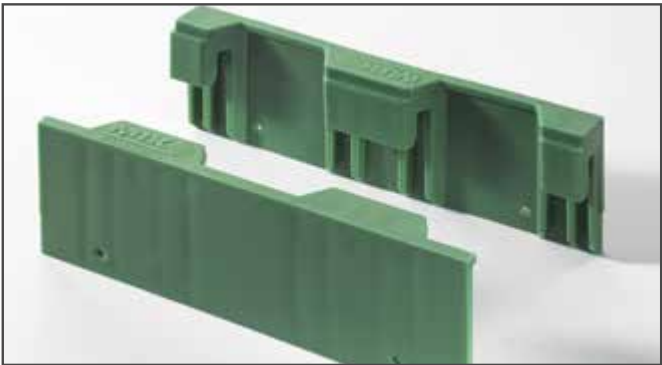


Edge strip for clean finishing

LOS

NEW

With the new MIK LOS „lift out system“ you can combine the advantages of the MIK flooring with a movable floor sytem. By using the LOS system you create panel units and support beams which can be handled easily. The flooring can be disassembled in a short time, the barn can be cleaned and used otherwise.



LOS pair of strips

| Technical data      |                    |               |
|---------------------|--------------------|---------------|
|                     | LOS pair of strips | LOS screw set |
| Item no.            | 04202              | 04205         |
| Measurements in mm* | 200                | 4.8 x 25      |

\* Dimensions in width x length



LOS the flexible flooring system



# MIK installation material

The small installation aids ensure simple mounting of penning systems and feeders on MIK flooring and concrete slats. They are specially designed to fit different shapes of MIK flooring.



**STS, CRD, SW, BC**  
anchor bolts for perfect mounting



**Slat anchor**



**Anchor**  
Anchor screws for perfect mounting

### Benefits

- 100% stainless steel prevents corrosion
- ideal force distribution on panels or DUO's
- the right mounting for all types of panels
- special screw sizes matching different panel types and support systems

| Screw type | M 8 x 65* | M 8 x 90* | M 8 x 120* |
|------------|-----------|-----------|------------|
| Item no.   | 17065     | 17090     | 17120      |

\* Torx 50 with security painting

### Technical data

|             | STS                           | CRD                       | SW    | BC             | Slat anchor           |
|-------------|-------------------------------|---------------------------|-------|----------------|-----------------------|
| Item no.    | 17033                         | 17020                     | 17050 | 17040          | 17075                 |
| Application | STEPPER<br>TRAPPER<br>SMARAGD | CHESS<br>RUBIN<br>DIAMANT | SWING | concrete slats | for all plastic slats |

# MIK installation material



**J-Hook**  
attachment to the substructure



**DUO TRACK**  
fastening of farrowing cages to the DUO support system

### Technical data

|             | J-Hook                 | DUO TRACK               |
|-------------|------------------------|-------------------------|
| Item no.    | 17010                  | 00455                   |
| Application | DUO and steel supports | mounting with DUO beams |

# MIK slurry system

An optimal working slurry system has both, the MIK drain stub and a MIK slurry plug plastic. The main advantage is durability and robustness against the environment in the slurry system.

### Benefits

#### Glue-on Drain Stub (typ AS)

- supply with or without center reduction
- 250 or 300 mm diameter
- available in various heights from 310 to 1000 mm
- available with or without center reduction

#### Slurry Stopper (typ GS)

- 200, 250 or 300mm diameter
- extremely strong and durable
- compact plug made from HDPE



other slurry parts  
available  
on request

### Technical data

|                | AS 250 | AS 300 | GS 200 | GS 250 | GS 300 |
|----------------|--------|--------|--------|--------|--------|
| Item no.       | 00230  | 00240  | 00250  | 00251  | 00252  |
| Diameter in mm | 250    | 300    | 200    | 250    | 300    |



# MIK ROLLS & MIK TOY

The successful duet MIK TOY and MIK ROLLS offers top-quality playing material for occupying pigs of all ages ideally and sustainably.

### Benefits

- MIK rolls are dust free compressed rolls of wheat and rape straw
- supplemented raw fibres effectively support the digestion process
- complies with legal EU regulations governing the provision of changeable manipulable materials
- MIK ROLLS are quickly accepted by the animals
- bacteriologically safe as they are compressed under heat during the production process



### Technical data

|                     | MIK TOY         | MIK ROLLS |
|---------------------|-----------------|-----------|
| Item no.            | 31005           | 31200     |
| Measurements in mm* | 80 x 580        | –         |
| Material            | stainless steel | 20 kg box |

\* Dimensions in width x length

### Benefits

- effectively reduces stress
- minimises behavioural disorders such as tail biting
- made of stainless steel for a maximum life span
- easy assembly
- easy to refill
- up to 30 animals per TOY

# MIK playing material

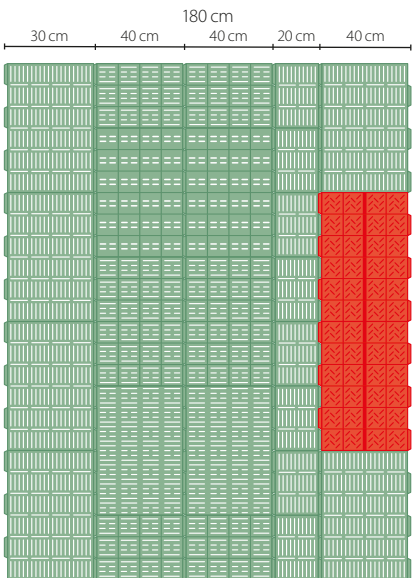
The new MIK rope clamps were developed for the fast and economic installation of playing ropes. Time-consuming knotting and installing of the rope is no longer necessary.

### Technical data

|          | Rope clamp | Cam cleat |
|----------|------------|-----------|
| Item no. | 31031      | 31040     |

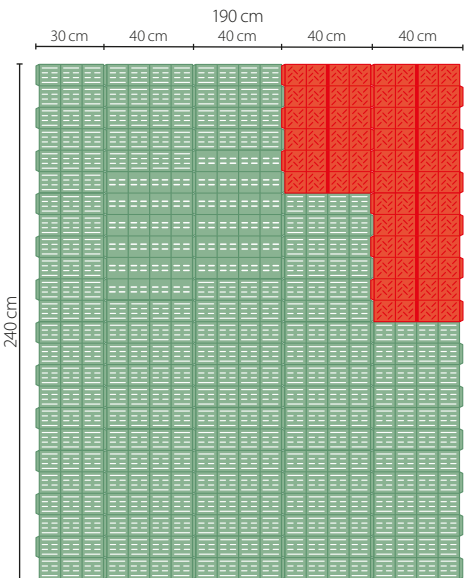


# Layout samples



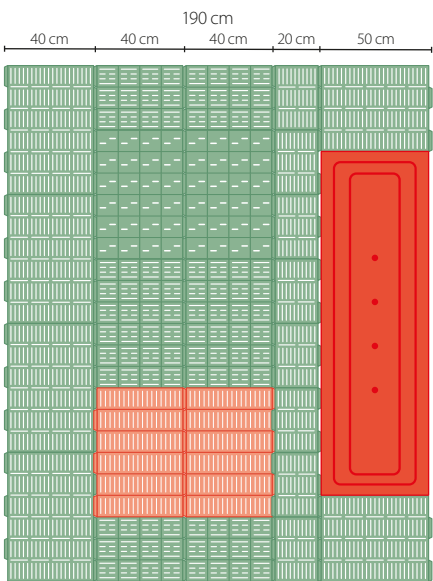
### Straight penning

Material:  
Mix of plastic & heated lying area for piglets



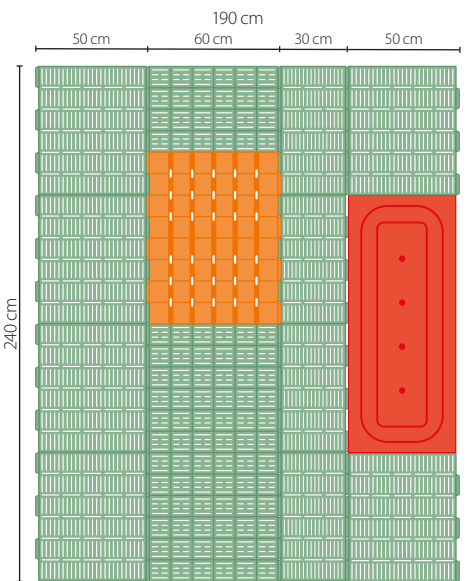
### Diagonal penning

Material:  
Plastic & heated lying area for piglets



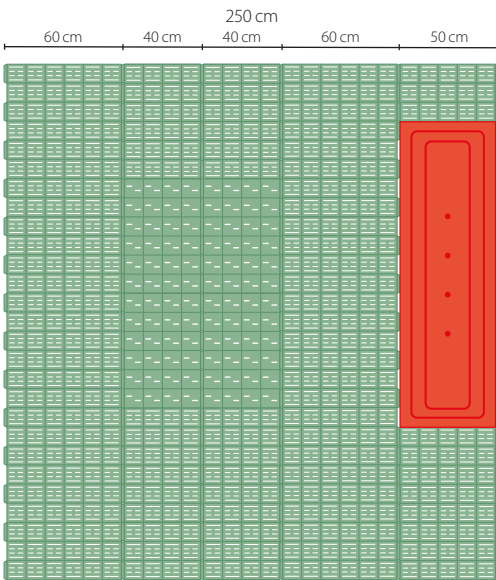
### Straight penning

Material:  
Mix of cast, plastic & heated lying area for piglets



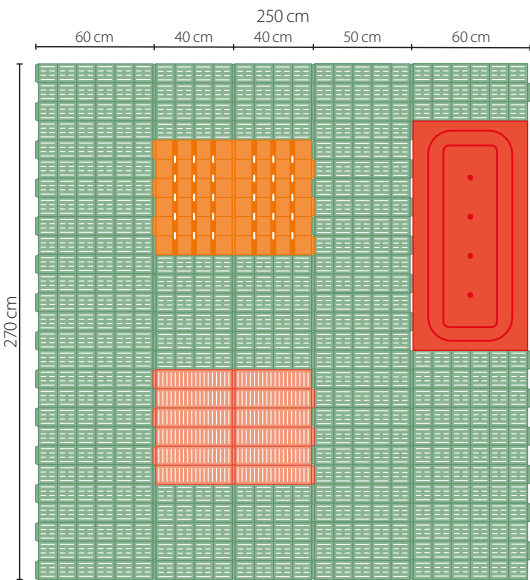
### Straight penning

Material:  
Mix of plastic, cast or concrete & heated lying area for piglets



### Freedom crate

Material:  
Mix of cast, plastic & heated lying area for piglets



### Freedom crate

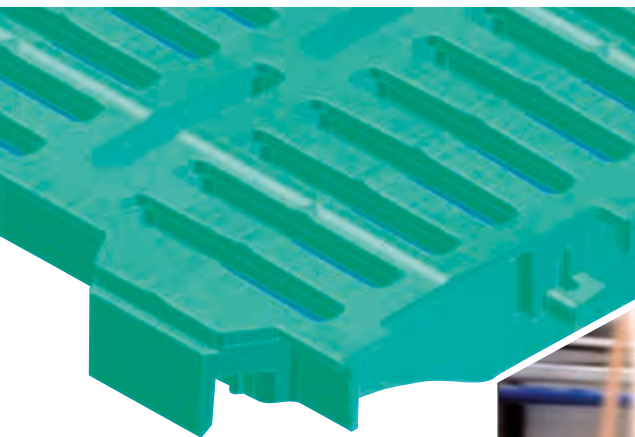
Material:  
Mix of plastic, cast or concrete & heated lying area for piglets



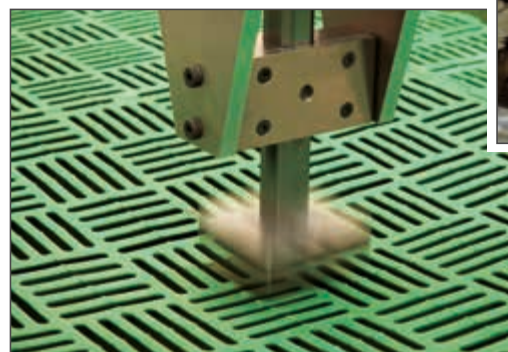
## MIK – the benchmark for pioneer performance

Questioning existing standards and actively involving our customers in the innovation process surely belongs to the traditional strengths of MIK. Thanks to these “virtues” and the close cooperation with highly reputed technological partners we are succeeding in setting the standards for new developments of plastic based flooring systems.

Improvement and innovation start with ideas and approaches turning into clear shapes and pictures. What is being visualized with modern CAD techniques in our laboratories ...



... is later being manufactured by high-tech injection-moulding machines.



Extreme endurance simulations and inspections ensure a sustainable high quality.



quality testing station

### The result:

**Products that keep their promise. Thanks to our cooperations with respected science and research institutions:**

- |                                     |  |
|-------------------------------------|--|
| ■ Justus Liebig Universität Giessen | ■ Deutsche Landwirtschaftsgesellschaft DLG |
| ■ Universität Bonn                  | ■ TÜV Süd                                  |
| ■ MPA Darmstadt                     | ■ Dr. Niemann Consult                      |
| ■ Institut für Werkstoffkunde       | ■ MPA Erwitte                              |
| ■ Gerres & Partner                  |  |

## The 5 pillars of MIK

Customer proximity and service, stable value, cost efficiency, ease of assembly and animal health

### Close customer service through ...

- comprehensive product consulting
- individual installation planning
- reliable order processing
- international logistics management
- technical support
- worldwide network of distribution partners

### Assembly without problems by ...

- well thought-out system interfaces
- far reaching compatibility between the individual products
- numerous panel sizes for individual flooring configuration
- quick installation

### Cost efficient operation through ...

- special geometric panel shapes for excellent self cleaning and easy disinfection
- protection against contamination by means of minimal gap sizes between the system components
- panels can be cut with minimal waste and without significant losses of bearing load
- highly energy-efficient MIK heating systems

### Extreme durability through ...

- 3D – CAD – construction
- loading simulation by FEM – analysis to meet desired part geometries
- rapid prototyping for early testing of function mechanics and exact suitability

### Outstanding durability by ...

- top-class virgin quality Polypropylene Copolymer
- protected MIK material additive formula
- ISO 9001 certification
- manufacturing supervision by accredited test institutions
- product tests by recognised neutral institutes

### Animals' friend because of ...

- hygienic rounded profiles
- limited danger of injuries thanks to anti-slip surfaces
- temperature neutral material

More information on  
[www.mik-online.com](http://www.mik-online.com)





**MIK INTERNATIONAL GmbH & Co. KG**  
**Sales Office:**  
 Masselbachstr. 22 · 56235 Ransbach-Baumbach  
**Fon** +49 2922 885 600 · **Fax** +49 2922 885 670



**[www.mik-online.de](http://www.mik-online.de)**